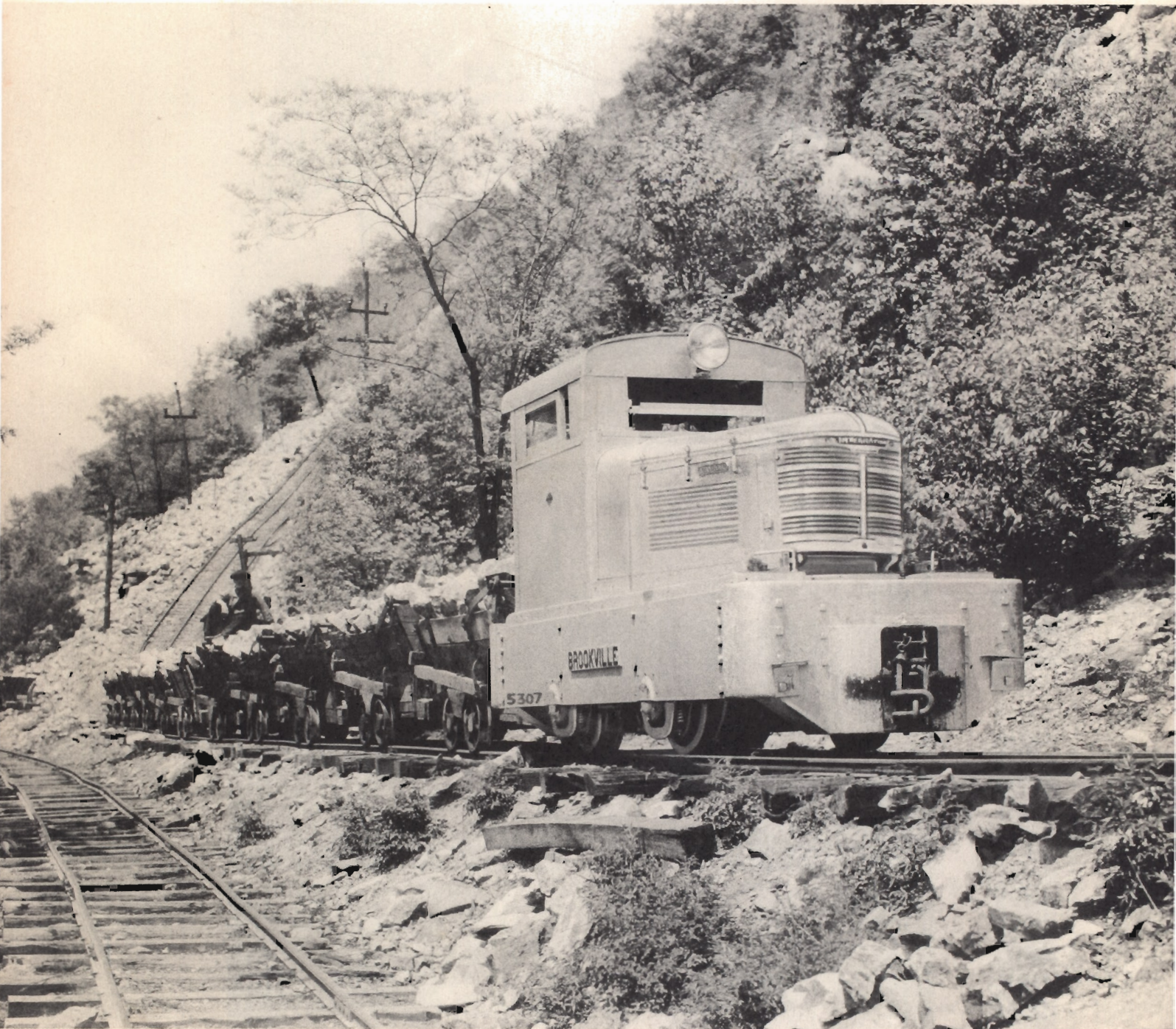


BROOKVILLE LOCOMOTIVES POWERED BY INTERNATIONAL



BROOKVILLE LOCOMOTIVE WORKS, BROOKVILLE, PA., U. S. A.

PRINTED IN U. S. A.

BULLETIN I-101



LITTLE LOCOMOTIVES
DOING *BIG* JOBS

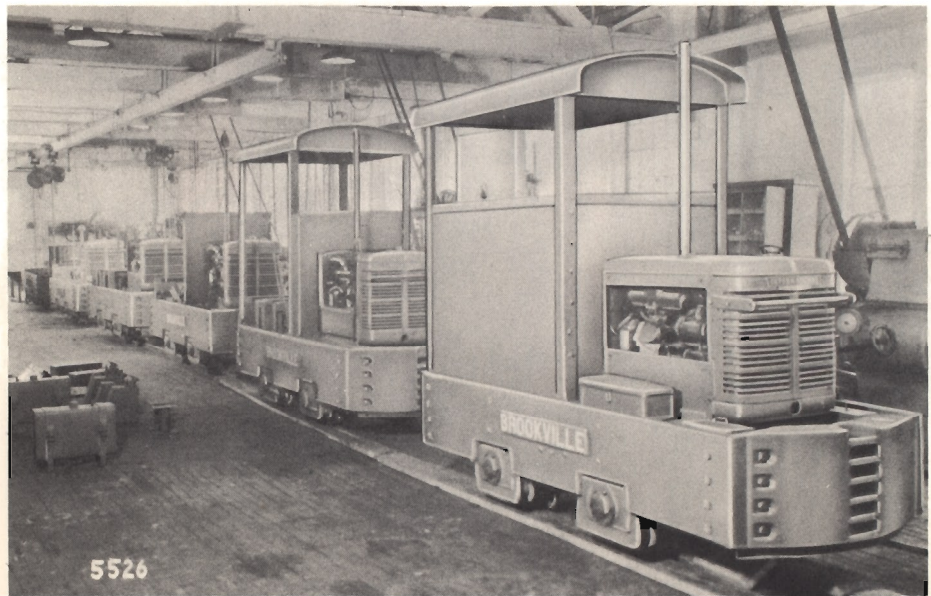


"WORK" *not* WEIGHT *is what counts*

It is customary to designate industrial locomotives in terms of weight, but locomotive weight and haulage capacity are two different things. It's the amount of weight hauled *behind* the locomotive, not the amount carried in the locomotive, that counts. The amount of work that a locomotive will turn out depends not only upon its weight, but also upon:

- ✓ **POWER**
- ✓ **SPEED**
- ✓ **TRACTION**
- ✓ **HANDLING EASE**
- ✓ **UNINTERRUPTED SERVICE**

Brookville locomotives out-perform others weighing more and costing more. The engines of the International Harvester Company provide an abundance of reliable power, and the Brookville chassis incorporates many superior operating features developed over a period of twenty-five years. The moderate price of these locomotives is made possible only because the power plant, clutch and transmission are made in large quantities by the International Harvester Company; and the production of the chassis has been simplified and perfected over a period of many years, by a company specializing in this particular type of locomotive.



*Production line
at Brookville Works*